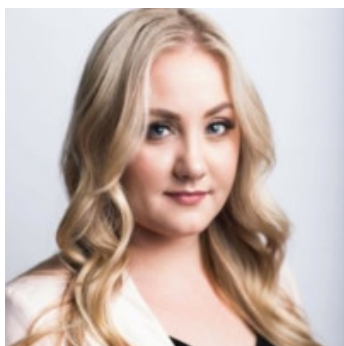


MARGINAL MEMOS

Volume 62, Number 7, February 17, 2020
Editor: Sadie Brendalen

Opportunities



TFIC Luncheon TODAY at 11:30

TFIC will hold a luncheon TODAY in room 202 at the St. Paul Student Center. The featured speaker will be Sammi Fleckner (pictured), Commodity Market and Risk Analyst at Foremost Farms USA. Complimentary lunch will be served starting at 11:30 a.m.

Jobs

Student Trainee (Internship): Foreign Agricultural Service; Washington D.C.

The intern will work on small advanced on-the-job unified segments of projects that consist of specified duties in a continuing program. The duties may include, but are not limited to:

- Make limited evaluation, analysis and interpretation of statistical and economic data gathered, selecting material to be used in general or specific projects.
- Compile and place in an orderly arrangement specified economic information from a variety of indicated and readily available sources, making rough preliminary analysis according to precise instructions.
- Analyze and interpret factual economic statistics and draft simple press releases explaining findings.
- Work with higher graded specialists in the preparation of publications and related material including drafting reports of a specific scope and complexity.
- Compose and compile difficult calculations or exact comparability determinations for the purpose of answering requests for information from the attaches stationed abroad and representatives of private trade groups and associations.

- Conduct research and prepares special economic reports and statistical analyses, as assigned.

[Apply online](#)

Research Assistant or Associate: Resources for the Future; Washington D.C.

RFF is seeking a Research Assistant or Research Associate to use, maintain, modify and add features to one of the power sector simulation models. The successful applicant will further develop and apply one of RFF's two electric sector simulation models, and may help with the other one as well. The two models are both advanced power sector models that project system operation and generator construction and retirement in successive years. Both are used to project the effects of energy and environmental policies, potential energy infrastructure investments, and other potential developments that affect the energy sector and the environment. Both are used in conjunction with air pollution models to also project health effects of different policies. The Engineering, Economic, and Environmental Electricity Simulation Tool (E4ST) uses an unusually detailed, realistic transmission system model. The Haiku model is a perfect foresight model with uniquely nuanced representation of policies. Which model or models the applicant works with will depend in part on research and policy priorities and funding, and in part on the applicant's skills and background.

[Apply online](#)

Postdoctoral Research Associate: University of Connecticut

The University of Connecticut's Department of Agricultural and Resource Economics invites applications for a two-year postdoctoral research associate position. This position is funded through USDA NIFA as part of the project, "Evaluating Alternative Water Institution Performance in Snow-Dominated Basin: Are Food Production Systems at Risk from Changing Snow Water Availability." Primary responsibilities will involve collaboration with several economists at multiple universities and institutions, as well as with researchers from various disciplines to evaluate how changes in mountain snowpack affect water availability, the effectiveness of existing and alternative water allocation institutions and policies in managing for change, optimal decision-making, and the distribution of economic costs and benefits from snow pack changes. The project features three economic components, with this position focusing on one of these; Dynamic optimization to incorporate stochastic water availability to assess alternative allocation mechanisms. However, the position requires close collaboration and coordination with researchers working on the project's other two economic models.

[Apply online](#)

Postdoctoral Research Associate: U.S. EPA

A postdoctoral research opportunity is currently available at the Environmental Protection Agency (EPA), Office of Research and Development (ORD), Center for Environmental Measurement and Modeling (CEMM), Watershed & Ecosystem Characterization Division (WECD), Watershed Management Branch (WMB), in Cincinnati, Ohio. EPA ORD recently reorganized and these are the newly named Centers/Divisions/Branches. This was formerly in ORD's National Exposure Research Laboratory (NERL), within the Immediate Office (IO). Potential endpoints of analysis could include improved water quality, restored designated uses, and/or ecosystem services. The research participant may collaborate with other scientists to help translate changes from remediation and restoration into ecosystem services using the soon to be released National Ecosystem Services Classification System (NESCS Plus).

The participant will gain knowledge of how the EPA interacts within the federal government and with relevant stakeholders on issues related to remediation and restoration. Additionally, the participant may gain hands-on experience and new knowledge from experts in other disciplines and direct participation in restoration projects.

[Apply online](#)

Seminars in other departments

MPC Seminar

Appointments Versus Commitments: Overcoming Self-Control Problems in Preventive Health

Jason Kerwin
UMN
Monday, February 17
12:15 p.m.,
50 Willey Hall

Life Course Seminar

Well-Being and Value Conflict

Valerie Tiberius
UMN
Wednesday, February 19
12:15 p.m.,
50 Willey Hall

Federal bag lunch

Employer Credit Checks: Poverty Traps versus Matching Efficiency

Dean Corbae
UW-Madison and Minneapolis Fed
Friday, February 21
12:00 p.m.,
Research Conference Room

Finance Dept. Seminar

Financial Frictions, Foreign Currency Borrowing, and Systemic Risk

Robert Marquez
UC-Davis
Friday, February 21
10:30 a.m.,
CSOM 1-143

Note:

If you wish to attend a seminar or bag lunch at the Federal Reserve Bank you must call (612-204-6455) or email Nancy Moua (nancy.moua@mpls.frb.org) a MINIMUM of 24 hours in advance to get your name on a visitor list. Alternatively Be prepared to give your affiliation (i.e., University of Minnesota graduate student, Department of Economics). If you are not on an approved visitor list, you will not be allowed to attend bag lunches or seminars at the Fed.

Departmental Publications

Bellemare, Marc F., Kenn Chua, Julieth Santamaria, and Khoa Vu. 2020. "Tenurial Security and Agricultural Investment: Evidence from Vietnam." *Food Policy*, February, 101839. <https://doi.org/10.1016/j.foodpol.2020.101839>.

Runge, Carlisle Ford, and Linnea Graham. 2020. "Viewpoint: Hunger as a Weapon of War: Hitler's Hunger Plan, Native American Resettlement and Starvation in Yemen." *Food Policy*, February, 101835. <https://doi.org/10.1016/j.foodpol.2020.101835>.



UNIVERSITY
OF MINNESOTA



COLLEGE OF FOOD, AGRICULTURAL
AND NATURAL RESOURCE SCIENCES

APPLIED ECONOMICS

[Mass email privacy statement](#) • [View this email online](#)

