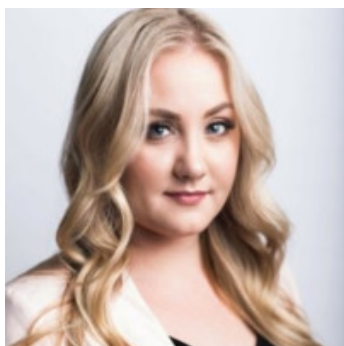


MARGINAL MEMOS

Volume 62, Number 6, February 10, 2020
Editor: Sadie Brendalen

Opportunities



TFIC Luncheon February 17

TFIC will hold a luncheon on Monday, February 17 in room 202 at the St. Paul Student Center. The featured speaker will be Sammi Fleckner, Commodity Market and Risk Analyst at Foremost Farms USA. Complimentary lunch will be served starting at 11:30 a.m.

[RSVP online](#)

Jobs

Fisheries Economist: Norwegian School of Economics

Centre for Applied Research at NHH (SNF), a research center at the Norwegian School of Economics, Bergen, Norway, invites applications for a three year post-doc position. The position is funded by the Research Council of Norway as part of the project Production in the Barents Sea Fisheries. The project has an interdisciplinary scope and candidates should have, or be close to complete, a PhD in economics, ecology, or a related field. The first objective of the project is to establish production or profit functions for Barents Sea fisheries and has a strong, empirical profile. The second objective is to estimate the long-run social value of the Barents Sea ecosystem that reflects resource use, trophic and market substitutions and interactions. These estimations will build on ecological and economic models of Barents Sea ecosystems and fisheries. Applicants should outline a research plan within the scope of the project, broadly defined (further details on the project are given below). This plan could entail applying parts of our framework to other ecosystems. Working in Norway, the post-doc will have access to detailed and unique Norwegian fisheries data and be situated in one of the fisheries economics hubs of the world. Applicants are asked to submit a brief application

letter, a complete CV, certificates with grades, and other relevant documentation. Up to five publications or working papers and a research plan should also be attached.

Applications should be submitted by e-mail to snf@snf.no.

Decision Analyst: Riverside Technology, Silver Springs, Maryland

Riverside Technology Inc. is seeking a decision analysis professional to develop and apply tools that inform NOAA leadership's observing system investment decisions by assessing the best mix of observing capabilities to satisfy high-priority organizational outcomes which provide societal economic benefits and satisfy legislative mandates. These tools include surveys and models of observing system portfolio impact on NOAA's products and services. This position requires expertise in optimization techniques to include decision tree analysis, value-tree modeling, scenario planning, discrete event simulation, game theory, probability, and linear programming. This position will investigate complex issues, identify, and solve problems and aid better decision making.

[Apply online](#)

Fisheries Economic Project Manager: University of Hawaii

The University of Hawaii's Joint Institute for Marine and Atmospheric Research (JIMAR) in the Pacific Islands Fisheries Science Center (PIFSC) in Honolulu seeks a Fisheries Economic Project Manager. This person serves as project manager for economic research projects working with the Ocean Synthesis and Human Dimensions (OSHD) Program at the Pacific Islands Fisheries Science Center in support of fisheries management in the Pacific Islands areas. Conducts fisheries economic analysis and develops economic modeling on commercial fisheries and seafood markets in the Pacific Islands Region (PIR), including economic assessments of management alternatives. Works with fisheries confidential data and collects secondary data. Works on select economic research projects and reports, including developing research designs, conducting interviews, designing database, entering data, analyzing data, visualizing data, producing outreach materials, supporting annual economic report compilation, making presentations to professional and lay groups, and writing reports and manuscripts for publication. Works with PIFSC and JIMAR economists to conduct field economic research on commercial and recreational fishing vessels and seafood markets in the Pacific Islands Region. Tracks projects, ensures deadlines are met, writes proposals for funding, and tracks manuscripts through the review process. Please go to www.rcuh.com and click on "Job Postings." You must submit the following documents online to be considered for the position: 1) Cover Letter, 2) Resume, 3) Supervisory References, 4) Copy of Degree(s)/Transcript(s)/Certificate(s).

[Apply online](#)

Assistant Professor: University of Maine

The School of Economics at the University of Maine invites applications for a tenure-track Assistant Professor in the areas of Regional Economics and Macroeconomics. We seek candidates with potential for high-quality scholarship; a commitment to excellent teaching; and a willingness to provide service to the university, state and profession. Responsibilities include conducting and disseminating original, cutting-edge research related to regional- and macro-economics, teaching graduate and undergraduate courses, and advising and mentoring students. We expect the successful candidate to develop a nationally recognized economics research program that supports efforts to enhance Maine's economic development, and expands and complements current research activities in the School of Economics.

Apply online

Seminars in other departments

MPC Seminar

Intergenerational Educational Mobility Among Mexican Americans Across the 20th Century

Jennifer Van Hook,
Pennsylvania State University
Monday, February 10
12:15 p.m.,
50 Willey Hall

MPC workshop

How to Review Articles for Journals

Rob Warren and Theresa Osypuk
Friday, February 14
12:15 p.m.,
50 Willey Hall

Note:

If you wish to attend a seminar or bag lunch at the Federal Reserve Bank you must call (612-204-6455) or email Nancy Moua (nancy.moua@mpls.frb.org) a MINIMUM of 24 hours in advance to get your name on a visitor list. Alternatively Be prepared to give your affiliation (i.e., University of Minnesota graduate student, Department of Economics). If you are not on an approved visitor list, you will not be allowed to attend bag lunches or seminars at the Fed.

Departmental Publications

Bellemare, Marc F., Yu Na Lee, and David R. Just. 2020. "Producer Attitudes Toward Output Price Risk: Experimental Evidence from the Lab and from the Field: Producer Attitudes toward Output Price Risk." *American Journal of Agricultural Economics*, February. <https://doi.org/10.1002/ajae.12004>.

Runge, Claire A., Andrew J. Plantinga, Ashley E. Larsen, David E. Naugle, Kate

J. Helmstedt, Stephen Polasky, J. Patrick Donnelly, et al. 2019. "Unintended Habitat Loss on Private Land from Grazing Restrictions on Public Rangelands." *Journal of Applied Ecology* 56 (1): 52–62. <https://doi.org/10.1111/1365-2664.13271>.

Mandle, Lisa, Zhiyun Ouyang, James Salzman, Ian Bateman, Carl Folke, Anne D. Guerry, Cong Li, et al. 2019. "The Case and Movement for Securing People and Nature." In *Green Growth That Works*, edited by Lisa Mandle, Zhiyun Ouyang, James E. Salzman, and Gretchen Daily, 3–16. Washington, DC: Island Press/Center for Resource Economics. https://doi.org/10.5822/978-1-64283-004-0_1.

Ruckelshaus, Mary, Gretchen C. Daily, Stuart Anstee, Katie Arkema, Onon Bayasgalan, Carter Brandon, Becky Chaplin-Kramer, et al. 2019. "Scaling Pathways for Inclusive Green Growth." In *Green Growth That Works*, edited by Lisa Mandle, Zhiyun Ouyang, James E. Salzman, and Gretchen Daily, 17–27. Washington, DC: Island Press/Center for Resource Economics. https://doi.org/10.5822/978-1-64283-004-0_2.

Daily, Gretchen C., and Stephen Polasky. 2019. "How Do We Stem Biodiversity Loss?" In *Biological Extinction*, edited by Partha Dasgupta, Peter Raven, and Anna McIvor, 1st ed., 332–57. Cambridge University Press. <https://doi.org/10.1017/9781108668675.015>.

(Polasky, Stephen)

National Academies of Sciences, Engineering, and Medicine. 2019. *Environmental Engineering for the 21st Century: Addressing Grand Challenges*. Washington, DC: The National Academies Press. <https://doi.org/10.17226/25121>.



UNIVERSITY
OF MINNESOTA



COLLEGE OF FOOD, AGRICULTURAL
AND NATURAL RESOURCE SCIENCES

APPLIED ECONOMICS

[Mass email privacy statement](#) • [View this email online](#)



