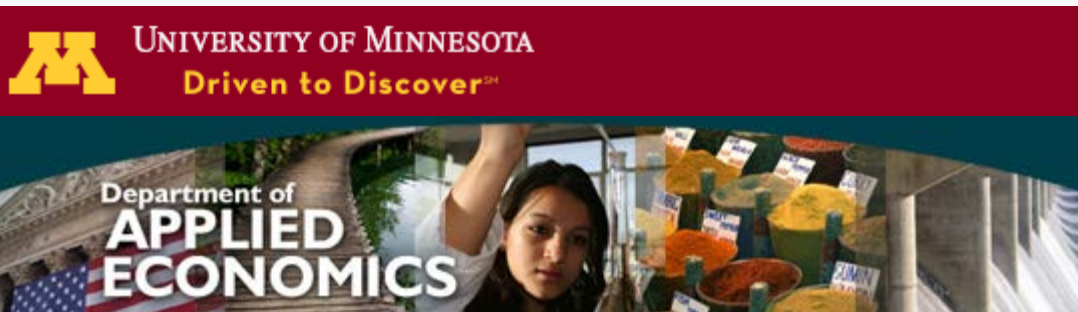


Learn about what's happening now in the Department of Applied Economics.

Is this email not displaying correctly?  
[View it in your browser.](#)



## Marginal Memos

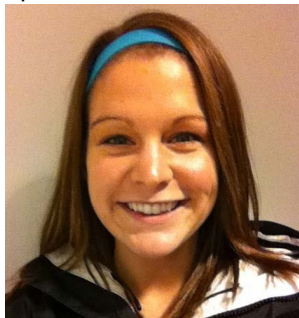
Volume 58, Number 41; October 14, 2016  
Editor: Sadie Brendalen, will1945@umn.edu

### Announcements

#### TFIC Luncheon Series

Tuesday, October 25, 2016 at 11:30 a.m.  
Cherrywood Room, St. Paul Student Center  
Complimentary buffet lunch will be served starting at 11:30. Please [RSVP online](#) by October 21.

Ann Kliethermes, Field Marketing Manager, MSP, fairlife, LLC will present: "Udderly Important to Believe in Better"



Ann joined fairlife as the Field Marketing Manager (FMM) in February 2015. As FMM, Ann develops, coordinates, and executes marketing campaigns for fairlife's core products in Minnesota. In 2012, she earned her bachelor's degree in Advertising from the University of Minnesota, with a minor in sports marketing, and currently serves on the Young Alumni Council for the University.

Kliethermes also received her Master's Degree in Sports Administration from Northwestern University in Chicago, and spend her time in grad school working for the University's athletic department, while also interning with Octagon Sports Marketing.

#### Last Chance to RSVP for Rob Johansson Seminar and Reception

Please join us in celebrating Dr. Johansson's outstanding accomplishments at a seminar and reception on October 20th from 2:00-4:00 p.m. in the [Cargill Building](#) Atrium and Seminar room. [RSVP online](#) or contact [Sadie Brendalen](#).

#### Community Fund Drive Pet-A-Puppy Event and Pet Food Drive

On Wednesday, October 19 from 11:00-1:00 p.m. in 230 Ruttan Hall, we will have several adorable pooches for you to pet from rescue agency Pause for Paws. Help them out by bringing in a donation (food, leashes, treats etc) and

dropping it off anytime between now and next Wednesday in 231 or 146 Ruttan Hall.

### **Grad Club Happy Hour**

The Grad Club will be hosting happy hour today, October 14th, at 4:00 p.m. at [Republic](#) (7 corners).



## **Jobs**

### **Associate Research Fellow**

The International Food Policy Research Institute (IFPRI) seeks a qualified candidate to serve as an Associate Research Fellow (ARF) or a Research Fellow (RF) in its Environment and Production Technology Division. This is a two (2) year, fixed term, renewable, exempt appointment based either at IFPRI's South Asia Regional Office in New Delhi, India or in Kathmandu, Nepal.

Current research areas include - but are not limited to - evaluating (1) the impact of technologies and practices associated with sustainable agricultural intensification, as well as targeted subsidies designed to support their sustained adoption; (2) interventions aimed at providing new technologies, products, and services that have a potential impact on labor demand, gender roles, household welfare, and migration; and (3) preferences and behavioral dimensions that influence the sustained adoption of new technologies and practices within heterogeneous farming populations. Particular emphasis is placed on the study of public policies that influence public, private, and civil society interactions around agricultural research, extension and advisory services, rural enterprise, and community-based initiatives. To apply, go to the [IFPRI website](#), select "Jobs", and "Research Positions" to link you to Position #16-155.

### **Socio-Economist**

The International Maize and Wheat Improvement Center, known by its Spanish acronym, CIMMYT is seeking a candidate for the position of Socio-economist to work on improving maize (and wheat) agro-food systems in Latin America. The position has a two-fold focus: (i) to assess and develop input/output value-chain opportunities, particularly in relation to agri-input (seed) markets; and (ii) to understand, document and enhance technology adoption and impacts. The position contributes to and draws on the experiences of a large multi-disciplinary research-for-development (R4D) team working on the Sustainable Modernization of Traditional Agriculture (MasAgro) initiative in Mexico and complementary projects to improve the livelihoods of poor farmers in Meso-America. You will work as a member of CIMMYT's Socio-Economics Program in close collaboration with other CIMMYT's programs and with public, private, local and international partners.

The position will be based at CIMMYT's Main Campus (located 45 km northeast of Mexico City, Mexico) and conduct activities in Central America, but will interact with CIMMYT's regional offices world-wide on a regular basis. Candidates must [apply online](#). Contact [Enrique Martinez](#) with any questions.

### **Postdoctoral Economist**

The International Center for Tropical Agriculture is seeking a postdoctoral economist to lead impact assessment (IA), and monitoring and evaluation (M&E) activities across different research areas being implemented by CIAT and partners in Asia. These include: cassava value chains, forage-based livestock-crop systems, integrated agricultural systems and landscapes, climate change and ecosystem services, and food systems and value chains. The position will work with the CIAT regional team based in Hanoi, Vietnam in assessing research-for-development outputs and outcomes - both for institutional

learning and for sharing with various external stakeholders. This position is expected to collaborate with various CGIAR Research Programs (CRPs) where CIAT is participating in Asia. The selected candidate will be part of an international, multidisciplinary team that delivers research outputs for development outcomes and impacts. He/she reports to the Leader of Impact Assessment Research at CIAT Headquarters and to the Regional Director for Asia.

Applicants are invited to send a cover letter illustrating their suitability for the position with a detailed curriculum vitae, including names and addresses of three referees knowledgeable about the candidate's professional qualifications and work experience. Submit applications by email to Human Resources Office, CIAT Headquarters, Cali, Colombia (attention: [Ms. Andrea Linares](#)) and should clearly indicate "Postdoctoral Economist -Asia".

### **Director**

The USDA, Natural Resources Conservation Service seeks a Director to fill a role in the Resource Economics, Analysis and Policy Division. This position provides national leadership, guidance and direction in the management of resource economics and social sciences disciplines that include resource economics and agricultural economics.

Coordinates the policy and technical aspects of the work within these disciplines for all NRCS analysis needs, including operational and programmatic functions. Find out more information and submit your application [online](#).

### **Assistant Professor**

The Food and Resource Economics Department seeks to fill a tenure-accruing position for an Assistant Professor with research and teaching interests in natural resource and/or environmental economics. This is a 12-month appointment that will be 40% teaching (College of Agricultural and Life Sciences) and 60% research (Florida Agricultural Experiment Station), available in the Food and Resource Economics Department, Institute of Food and Agricultural Sciences, at the University of Florida. Duties will include teaching two or three undergraduate and/or graduate courses per year on topics related to candidate's areas of interest or department needs. Tenure will accrue in the Food and Resource Economics Department. The faculty member will participate actively in undergraduate education and graduate education by chairing graduate committees, serving on graduate committees, supervising thesis and dissertation research, supervising undergraduate research, and publishing the results with his/her graduate students. The faculty member will seek contract and grant funding actively to support his/her program. The faculty member will engage in Extension activities in his or her program area. [Complete job description and application available online](#).

### **Domestic Baseline Coordinator**

The Economic Research Service, Market and Trade Economics Division, Agricultural Policy and Models Branch is seeking a baseline coordinator to prepare domestic baseline projections for review and clearance by the World Agricultural Outlook Board, conduct evaluations of various policy options and program parameters required to implement farm commodity programs, coordinate and serve as research leader for all Baseline-related high priority and sensitive studies mandated by Congress, the Office of Management and Budget, and other Government agencies, as well as other duties. Use [this link](#) to view the entire application and apply online.

### **Postdoctoral Researcher**

The George Perkins Marsh Institute at Clark University seeks a Postdoctoral Researcher in environmental economics, with an emphasis in ecosystem service valuation, stated and stated/revealed preference methods, and benefit transfer to join a vibrant and growing interdisciplinary research team.

The fellow will contribute to a portfolio of research projects led by George Perkins Marsh Institute (GPMI) director Robert J. Johnston and assistant director Dana Bauer, addressing multiple aspects of environmental and non-market valuation. These include large-scale projects supported by the National Science Foundation, Environmental Protection Agency, National Oceanic and Atmospheric Administration, US Department of

Agriculture, and others. Specific topics include the estimation of (a) the value of water quality improvements, (b) the effect of ecosystem service information on homeowners' lawn care and landscaping behaviors and (c) the benefits of coastal climate adaptation. The fellow will also be encouraged to develop individual research interests. This is an excellent opportunity for an early career researcher wishing to develop a strong research program. To apply for this position please [email](#) a complete list of application materials which includes: A cover letter explaining qualifications and interest; an updated CV; a graduate transcript; names and contact information for three references and a writing sample. Questions should be directed to [Robert Johnston](#).

### **Regional Economic Modeller**

CISRO in Australia is seeking a regional economic modeller. This is an opportunity to provide influential scientific leadership in linking basin scale hydrological processes, hydropower energy production and agricultural production to regional/national scale economic assessments. The Research Consultant will also contribute to the wider interdisciplinary efforts of the Land and Water business unit, within international projects that assess the integrated energy, food and water security of large river basins located within countries typified as developing economies.

The Research Consultant will build and maintain local and international alliances and networks that provide an up-to-date awareness of advances in technology and ideas. You will report on the uptake, outcome and impact of research outputs, provide a lead role in securing project funds through interactions with local and international clients and prepare detailed research proposals and project reports. You will seek advances in scientific knowledge and build on original and innovative concepts of others, recognize and exploit opportunities for innovation and generate new theoretical perspectives. [More information and to apply online.](#)

### **Departmental Seminars**

#### **Trade and Development Seminar**

*"Smog in Our Brains: Gender Difference in the Impact of Exposures to Air Pollution on Cognitive Performance"*

Xi Chen, Assistant Professor, School of Public Health & Institution for Social & Policy Studies, Yale University

Friday, October 14

10:30 a.m., 119 Ruttan Hall

*TBD*

Leah Bevis, Ohio State University

Friday, October 21

10:30 a.m., 119 Ruttan Hall

#### **Agricultural and Applied Economics Seminar**

*"Poorly Measured Confounders are More Useful on the Left Than on the Right"*

Hannes Schwandt, Assistant Professor, Department of Economics, University of Zurich, Switzerland

Wednesday, October 19

12:00 p.m., 119 Ruttan Hall

[Paper Available](#)

### **Seminars in Other Departments**

#### **Minnesota Population Center**

MPC Seminar

*"Intergenerational Mobility During the Great Depression"*

James Feigenbaum, PhD Fellow, Princeton University

Monday, October 10

12:15 p.m., 50 Willey Hall

**MPC Workshop***Beneficence betrayed: Thoughts on the ethics of researching disadvantaged populations*

Michael Oakes (Epidemiology and Community Health)

Friday, October 21

12:15 p.m., MPC Seminar Room

**HPM Seminar***"What is Evidence?"*Robert Kane, MD, Center on Aging, Minnesota Area Geriatric Education Center,  
Minnesota Evidence-based Practice Center

Friday, October 14

11:45 a.m., 3-125 MMB

**Federal Reserve Bank Seminar***Fed Bag Lunch**"Self-Fulfilling Debt Restructuring"*

Tim Uy, Cambridge

Friday, October 14

12:00 p.m., Research Conference Room

**HCRC Brown Bag Seminar***"The Play's the Thing: Theatre Arts and School Readiness in Low-Income Preschoolers"*Amy Susman-Stillman, Center for Education and Early Development, University of  
Minnesota

Tuesday, October 18

12:00 p.m., Humphrey School Room 205

**Departmental Publications**

Mkondiwa, M. "Graphical Analysis of Agricultural Research Spillover Potential."

*Economics of Innovation and New Technology* (2016): 1-21. doi:

10.1080/10438599.2016.1238913

NOT available online.

Nelson EJ, Helmus MR, Cavender-Bares J, Polasky S, Lasky JR, et al. (2016)  
Commercial Plant Production and Consumption Still Follow the Latitudinal Gradient in  
Species Diversity despite Economic Globalization. *PLoS One* 11(10): e0163002.[Available online.](#)Nyborg, K., J.M. Anderies, A. Dannenberg, T. Lindahl, C. Schill, M. Schlüter, W.N.  
Adger, K.J. Arrow, S. Barrett, S. Carpenter, F.S. Chapin, A. Crépin, G. Daily, P.  
Ehrlich, C. Folke, W. Jager, N. Kautsky, S.A. Levin, O.J. Madsen, S. Polasky, M.  
Scheffer, B. Walker, E.U. Weber, J. Wilen, A. Xepapadeas, and A. de Zeeuw (2016)  
Social norms as solutions. *Science* 354: 42-3. [Available online.](#)Keeler, B.L., J.D. Gourevitch, S. Polasky, F. Isbell, C.W. Tessum, J.D. Hill, and J.D.  
Marshall. (2016) "The social costs of nitrogen." *Science Advances* 2: e1600219.[Available online.](#)

---

*Copyright © 2016 Regents of the University of Minnesota, All rights reserved.*

The University of Minnesota is an equal opportunity educator and employer.

**This message was sent from:**

Department of Applied Economics

1994 Buford Avenue

St. Paul, MN, 55108

USA

[mass email privacy statement](#)

