

Learn about what's happening now in the Department of Applied Economics.

Is this email not displaying correctly?
[View it in your browser.](#)

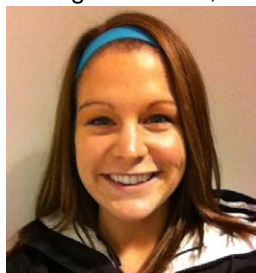


Marginal Memos

Volume 58, Number 11; March 3, 2016
Editor: Sadie Brendalen, will1945@umn.edu

Events

- Grad Club Happy Hour: Friday, March 4, 2016, 4:15pm; Waite Library
- CFANS Research Resource Fair: Wednesday, March 23, 2016. 10:00-2:00 p.m., in the Cargill Building. The Research Resource Fair is a great opportunity for faculty, grad students, post docs, researchers and administrators to learn about campus resources that can support their research. Visit CFANS [Research Resource Fair](#) to find out more.
- The Food Industry Center Luncheon Series: Wednesday, March 30, 2016. 11:30 a.m., room 202 in the St. Paul Student Center. The presentation, "*Udderly* Important to Believe in Better", will be given by Ann Kliethermes, Field Marketing Manager for MSP, fairlife, LLC. [RSVP by March 29.](#)



Anne Kliethermes, MSP, fairlife, LLC

Opportunities

Call for Papers

The 2017 annual winter meeting of the ASSA will be held in Chicago, Illinois on January 6-8, 2017. The AERE Program Committee will organize AERE sessions. The deadline for submission is April 15, 2016 by midnight PDT. All submission should be made via email to:

Katrina Jesse
University of California, Davis
Email: kkjessoe@ucdavis.edu
Subject Line: AERE ASSA--Surname of corresponding author

Departmental Seminars

Graduate Student Seminar Series

Social Capital and the Intergenerational Mobility of Immigrants

Friday, March 4, 2016

Besuf Alemu, Ph.D. Candidate

1:30-2:30 p.m., 230 Ruttan Hall

Trade & Development Seminar*Medium Term Educational Consequences of Alternative Conditional Cash Transfer Designs: Experimental Evidence from Colombia.*

Friday, March 4, 2016

Felipe Barrera-Osorio, Associate Professor of Education and Economics, Graduate School of Education, Harvard University

10:30-12:00 p.m., 119 Ruttan Hall

Environmental and Resource Economics Seminar*Implementing the Optimal Provision of Ecosystem Services under Climate Change (co-author David Lewis, Oregon State University)*

Monday, March 7, 2016

Steve Polasky, Department of Applied Economics, University of Minnesota

12:00-1:30 p.m., 230 Ruttan Hall

Agricultural and Applied Economics Seminar

Wednesday, March 9, 2016

Carlo Azzarri, Research Fellow, International Food Policy Research Institute (IFPRI)

12:00-1:30 p.m., 119 Ruttan Hall

The most up-to-date seminar schedules can be located on the [Department of Applied Economics webpage](#).

Seminars in Other Departments**Minnesota Population Center- Inequality & Methods Workshop****Data Visualization Using Excel*

Jon Schwabish (Urban Institute)

Friday, March 4, 2016

9:00 a.m.- 4:00 p.m., MPC Seminar Room, 50 Willey Hall

This is a special all day event. The event is full, but if you would like to be placed on the waitlist please contact [Pamela Vold](#).*Minnesota Population Center***Integrating the Demographic and Health Surveys: Past Achievements and Future Prospects*

Elizabeth Boyle and Miriam King (Minnesota Population Center)

Monday, March 7, 2016

12:15-1:15 p.m., MPC Seminar Room- 50 Willey Hall

Health Policy & Management*Health Care Homes: What is the impact?*

Douglas Wholey, Ph.D., Center for Care Organization Research & Development; Michael Finch, Ph.D., Finch & King; Nathan Shippee, Ph.D., Health Policy & Management.

Wednesday, March 9, 2016

12:15-1:15 p.m., 2-520 Moos Towers

Center for Human Resources and Labor Studies Research Seminar*Job Changes and the Returns to Seniority*

Joe Ritter, University of Minnesota, Department of Applied Economics

Friday, March 11, 2016

12:00-2:00 p.m., Carlson L-126

Jobs

Director

South Dakota State University, Ness Division of Management and Economics is searching for a director. This is an endowed core faculty role consisting of 50% teaching/research and 50% oversight and coordination. The division is an interdepartmental entity encompassing faculty from the academic programs that offer management related curriculum. The director ensures that communication and coordination exist relating the management related curriculum, faculty research, student engagement and industry feedback. The position profile is available [here](#).

Agricultural Economist

The USDA's FSA-Global Policy Analysis Division is seeking an Agricultural Economist, an GS-9/11/12 position. The position will serve as Agricultural Economists, and be providing economic analysis and evaluation of trade policies and practices affecting the U.S. agricultural industry. For more information on this position, visit the [USAjobs website](#).

Research Specialist/Research Professional

The University of Chicago Law School is seeking both a research specialist and a research professional to conduct empirical research in collaboration with the School's world-class law and economics faculty. These positions will work within the Coase-Sandor Institute for Law and Economics and work with faculty who are associated with the Institute. To apply for either of these positions, visit the [University of Chicago job website](#), using reference numbers 100130 for specialist and 100131 for professional.

Post-Doc

The Yale School of Forestry & Environmental Studies, Yale Center for Environmental Law & Policy, led by Professor Dan Esty, is seeking a two year post-doctoral research associate to serve in a leadership role developing the 2018 Environmental Performance Index (EPI). Leading the project includes mobilizing a team of partners, researchers, and experts, while taking primary responsibility for the framing, data analysis and production of a high quality report. To apply, please submit a cover letter and CV to [Lisa Dale](#).

Professor

The Biology Program, Faculty of Natural Sciences and Mathematics, at the Universidad del Rosario in Bogotá, Colombia is hiring for a full-time, tenure-track, professor in Environmental or Ecological Economics. The successful candidate must submit an application in English and include: A detailed CV with a complete list of publications; a research statement summarizing experience interests and an outline of the research program that can potentially be developed at El Rosario; a teaching statement describing experience and teaching philosophy and the names and full contact information of at least three references. The application should be submitted by email to [Yeimy Rocha](#).

Director

The Institute of Social and Economic Research (ISER) at the University of Alaska Anchorage is seeking applications for the position of Institute Director. The Director will lead the Institute through strategic planning aligned with ISER and UAA missions, developed collaboratively with staff and stakeholders. The incumbent will represent the Institute in a wide range of venues, generate external funding to support the Institute, help develop external funding opportunities for faculty members and participate in proposal development. More details are [available online](#).

Copyright © 2016 Regents of the University of Minnesota, All rights reserved.

The University of Minnesota is an equal opportunity educator and employer.

This message was sent from:

Department of Applied Economics
1994 Buford Avenue
St. Paul, MN, 55108



USA

[mass email privacy statement](#)

