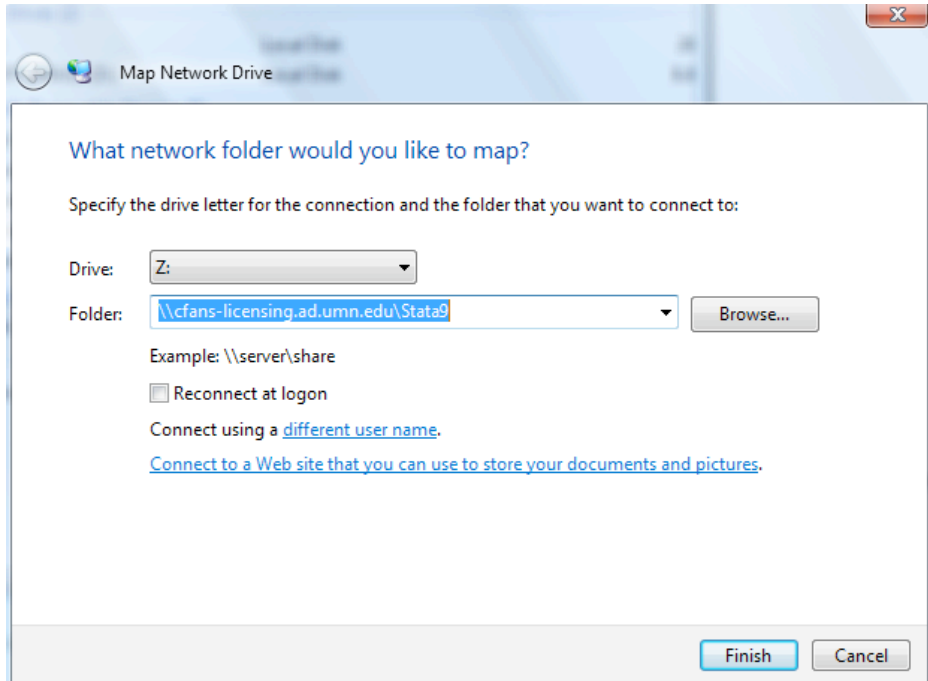


## Tutorial: Running Stata over the VPN

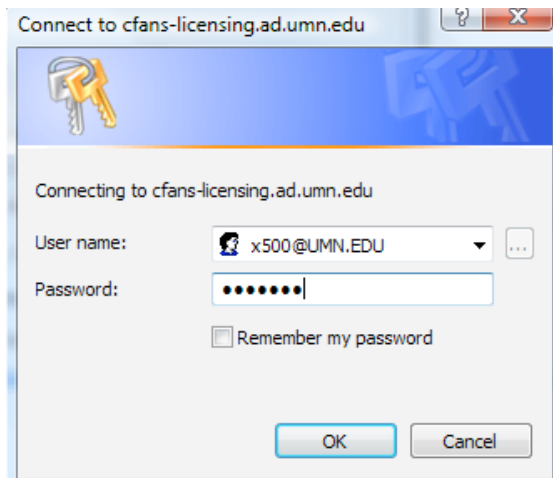
To run Stata when you are away from campus requires that you have installed both the virtual private networking (VPN) [software](#) from the university and installed the x500 [authentication pack](#).

Once these are both installed the following steps can be used to run Stata.

1. Connect the VPN using your x500 username and password
2. Go to my computer and select Map Network drive. This option may be under the tools menu for Windows XP.
3. From the Map Network drive dialog box enter the following folder address:  
`\\cfans-licensing.ad.umn.edu\Stata9`

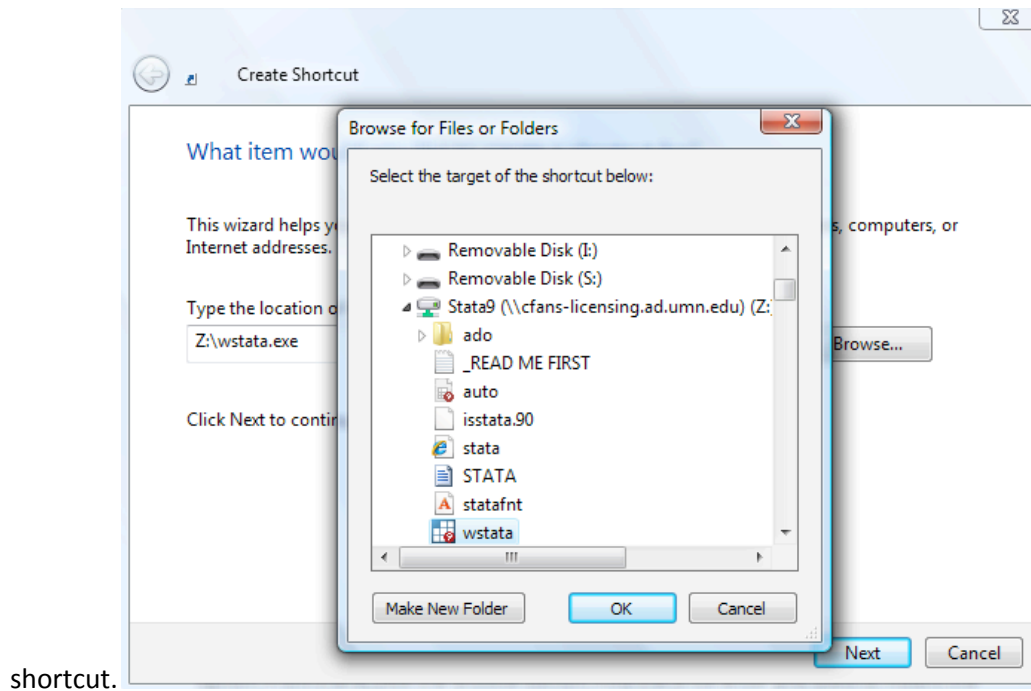


4. Click finish or connect. A new dialog box will ask you for your username and password. Be sure to put "@UMN.EDU" and the end of your username for this dialog box; it is case sensitive.



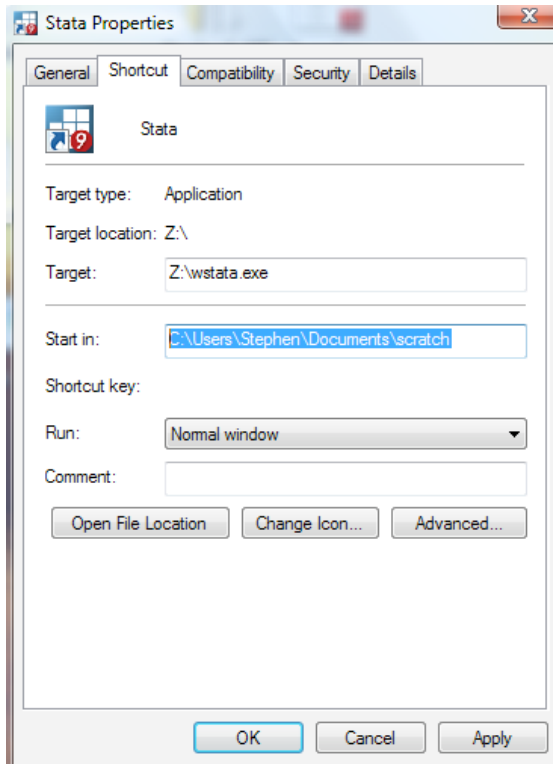
5. Next, go to your desktop and right click on the background. Then select the create new shortcut option. From there, click the browse button. Find the drive letter you used to mount the

network folder under my computer. Select the file wstata.exe. Finish by entering a name for the



- shortcut.
6. Next, create a scratch folder that we will use to run STATA. An empty folder will do.

7. Find the shortcut on the desktop and right click it. Select the properties option. Type in the address of your scratch folder in the “Start in:” text box. Select ok.



8. If you are using Windows Vista, right click the newly created shortcut and select Run as Administrator. Otherwise just double click the shortcut. Several prompts may ask you if you really want to run this program and or allow it to run as an administrator, select yes.
9. Stata may take several minutes to load over the network, even on broadband connections. Please remember to save any datasets and log files to your own hard drive.